

Pignanelli Residence

Chelsea, Michigan



The home's location amongst other houses, dictated careful placement of windows and rooms to maximize the dramatic views while capturing solar heat. The ground floor, set into a north-facing hill incorporates a two-car garage, entry foyer, guestroom/bath and storage areas. The solarium, with under-floor heat storage, is a sunny connection between the lower level and the living/dining/kitchen areas above. Sliding glass doors allow expansive views through the solarium, while allowing that space to undergo larger temperature fluctuations. Well-insulated walls and ceilings, mass walls, south-facing glass, and the solarium all work to reduce its heating needs to a minimum. Superb daylighting reduces the need for artificial lights while creating a cheerful atmosphere, even on cloudy days.



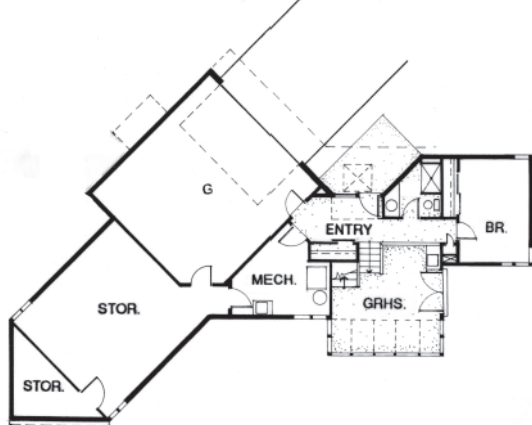
Solarium



Living Room Trombe Wall



First Floor Plan



Second Floor Plan



Sunstructures Architects

201 East Liberty, Ann Arbor, MI 48104 (734)994-5650